

Whenuapai School

Airport Road, Auckland
New Zealand

Newsletter – 17 October 2023

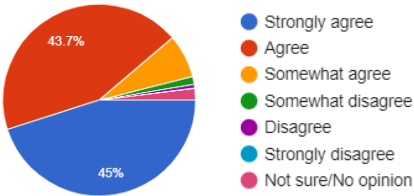
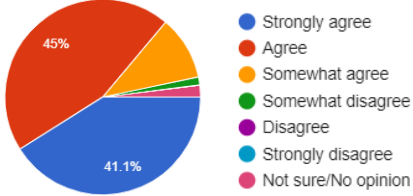
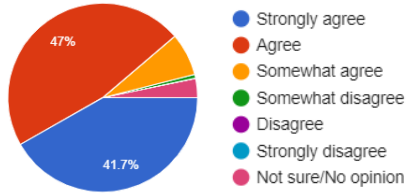
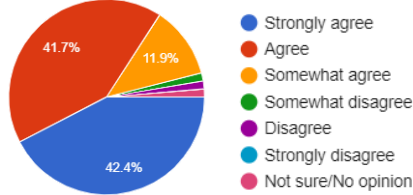
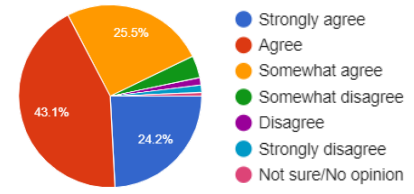
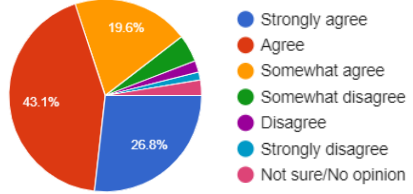
Tēnā Koutou

What a fabulous, but frantic 4 weeks. We made it, we have opened our Whenuapai Senior Campus, and it is a beautiful learning environment. The holiday break was extremely busy as we moved, unpacked, and established the school, all the while being surrounded by trades people finishing the last minor, and not so minor jobs. The opening ceremony was an amazing event, thank you to everyone who managed to attend. There is more information on the opening later in the newsletter. Do you want to have a look at our Senior Campus? Open days are being held this week on Wednesday 18th, Thursday 19th and Friday 20th October, between 8:30am and 3:30pm. If you would like to book a tour, please email Claire at the school office - office@whenuapai.school.nz.

I hope you had a wonderful school holiday and managed to find some family time to enjoy the outdoors in the ever-improving weather. It was great to see the tamariki return last week and I would like to extend a warm welcome to all our new Whānau who have joined us.

Our roll has officially passed 565 students so I don't think we can call ourselves a small school anymore. With only 49 Year 8 students leaving at the end of the year, it is looking like our 2024 starting school roll is going to be the largest in the school's history. If your tamariki are not returning to Whenuapai School in 2024, please let your Kaiako/Teacher or the Office know, as this helps with our planning and school organisation.

A massive thank you to everyone who completed the community survey last term. We ended up with 157 responses. The information is a graphic representation of the responses to the questions - the full report is available in the Office. The School Board is using this information to develop our strategic direction. A draft will be shared with you in the next few weeks for your feedback.

<p>I feel confident in approaching Whenuapai School about any issues that may arise: 151 responses</p>  <p>43.7% Agree, 45% Strongly agree, 11.9% Somewhat agree, 1.6% Somewhat disagree, 1.6% Disagree, 1.6% Strongly disagree, 1.6% Not sure/No opinion</p>	<p>My child feels safe and cared for at Whenuapai School: 151 responses</p>  <p>45% Agree, 41.1% Strongly agree, 11.9% Somewhat agree, 1.6% Somewhat disagree, 1.6% Disagree, 1.6% Strongly disagree, 1.6% Not sure/No opinion</p>
<p>Whenuapai School supports my child to value other cultures and respect those around them: 151 responses</p>  <p>47% Agree, 41.7% Strongly agree, 11.9% Somewhat agree, 1.6% Somewhat disagree, 1.6% Disagree, 1.6% Strongly disagree, 1.6% Not sure/No opinion</p>	<p>My family has a sense of belonging at Whenuapai School: 151 responses</p>  <p>41.7% Agree, 42.4% Strongly agree, 11.9% Somewhat agree, 1.6% Somewhat disagree, 1.6% Disagree, 1.6% Strongly disagree, 1.6% Not sure/No opinion</p>
<p>I have a good idea of my child's educational progress at Whenuapai School: 153 responses</p>  <p>43.1% Agree, 24.2% Strongly agree, 25.5% Somewhat agree, 1.6% Somewhat disagree, 1.6% Disagree, 1.6% Strongly disagree, 1.6% Not sure/No opinion</p>	<p>Whenuapai School is preparing my child well for future learning: 153 responses</p>  <p>43.1% Agree, 26.8% Strongly agree, 19.6% Somewhat agree, 1.6% Somewhat disagree, 1.6% Disagree, 1.6% Strongly disagree, 1.6% Not sure/No opinion</p>

Mā te kimi ka kite, mā te kite ka mōhio, mā te mohio ka mārama” - “Seek and discover. Discover and know. Know and become enlightened”, is the Inquiry Whakataukī for Term 4 and the tamariki are going to be exploring it from a scientific lens. Last week there was a wide variety of exploration and discovery underway from sound exploration to gravity and everything in between. Please refer to your team newsletters for further information.

Term 4 is always amazing and exciting with so much on and to do. HERO will continue to be our communication hub, please make sure your notifications are turned on. I have been informed that when some phones update their operating system HERO needs to be reinstalled because notifications no longer work. If you need any assistance, please contact the Office – office@whenuapai.school.nz or 09 416 8779.

I am looking forward to a brilliant term.

Ngā mihi, Adam Cels

WHENUAPAI SCHOOL SENIOR CAMPUS OPENING



WHENUAPAI SCHOOL
Living is Striving

What an amazing start to our new school. Our tamariki are just loving the new spaces. Every time we have been to visit them, they are busy working, enjoying the variety of learning spaces. These calm, quiet environments suit our learning styles, especially our purpose-built Design, Arts and Food technology spaces. Please come and have a look around!

DAWN CEREMONY



On Monday 9th October we arrived in the dark at 5am to meet our Kaumātua. We were invited down the driveway and blessed each room as we snaked our way through the learning environments.

We acknowledged the tangata whenua of this land and all those who have helped make this school the beautiful space that it is today.



OUR LEARNING ALREADY...

Utilising our amazing spaces we are learning all about physics and planet earth and beyond. Through six different science-based concepts all tamariki have spent the week experimenting. Covering concepts such as gravity, friction, heat, light, sound and beyond planet earth, we will work through the scientific process and prepare a science fair to present to our community.





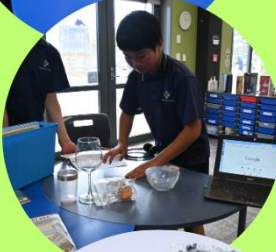
3.

OPTIONS

This term our options have been selected based on feedback from students, parents and concepts from the NZ curriculum.

All options include literacy and mathematical concepts plus education outside the classrooms such as Health and PE, Technology and the Arts.

Choices include: hospitality, kayaking, sewing, stop motion, and woodwork.



OUR UNIQUE SPACES & OPEN DAYS

4.

So far the purpose built playground has been a highlight.

With a full size basketball and netball turf, age appropriate climbing frames and net, our tamariki have been enjoying every minute of their break times.



WHENUAPAI SENIOR CAMPUS OPEN DAYS

Nau mai haere mai,
We invite you to visit the new campus and see it in action. You are welcome to collect your child on the way and bring them with you on the tour. Please email the office to book in a time for Wednesday, Thursday or Friday week 2.

WEDNESDAY 18TH OCT

THURSDAY 19TH OCT

FRIDAY 20TH OCT

office@whenuapai.school.nz



Dates for your diary

18-20 October Open Days – Senior Campus	Thursday – 2 November 6.00pm Board Meeting
Wednesday – 18 October Rm4 Plant Mulching Trip	Friday – 3 November Year 5&6 Athletics Gumboot Friday
Friday – 20 October 8.00-9.30am & 2.30-3.30pm - FOW Spring Plant Sale	Mon 6 & Tues 7 November School Photos
Monday – 23 October Labour Day	Wednesday – 8 November NW Year 5&6 Cricket
Wednesday – 25 October Year 2-3 Athletics	Thursday – 9 November Year 4 Athletics
Thursday – 26 October NW Year 7&8 Badminton	Friday – 24 November Teacher Only Day – No School
Friday – 27 October Year 0-1 Athletics	Wednesday – 6 December Sports Prizегiving
Tuesday – 31 October NW Year 7&8 Touch	Friday – 15 December Mistletoe Mania
Wednesday – 1 November Year 7&8 Athletics	Wednesday – 20 December Last Day Term 4 – 12.40pm finish

Term 3 Donation Winner

As a way of saying thank you, each term we hold a prize draw and all families who have paid their school donation, in full, go into the draw to win their child’s donation back. For Term 3, our lucky winner was Keya Seramsetty – congratulations to Keya and family and thank you for your support of Whenuapai School.

We will hold another draw at the end of term 4 and as a bonus we will hold an additional draw which is available to all families who make a donation to our Kura (whether it is the full amount or not) and the winner of this prize draw will receive a \$100 grocery voucher. Both draws will take place and winners will be advised on Friday, 15 December

[To pay your school donation please click here!](#)

Uniform Reminder

- Please remember to **name all uniform items** – especially hats and jumpers.
- Please note that **school hats are compulsory in Term 4.**

Hats can be purchased online at Argyle Schoolwear!

[Please click here!](#)



Mason Millan

Last term we told you about one of our amazing students, Mason Millan, who was about to head away to France as a Defender of Tomorrow to be a mascot for the mighty All Blacks at the Rugby World Cup well check out these INCREDIBLE pictures from his very special time away



Drop off and Pick Up

It would be great if we could increase the number of tamariki walking to school on a regular basis. Walking to school is great for family time, developing independence, fitness, connecting with friends and our environment.

If you are driving to school, please remember to:

- Keep the bus stop and section of road leading to the bus stop clear at all times
- Only stop and park your vehicle in the designated parking areas
- Please do not stop or park over driveways, yellow lines or the zoned area near the crossing
 - Please also show consideration to our neighbours by not parking across their driveways.
- No U-turns outside of the school or parking areas
- Ensure you slow down when approaching the pedestrian crossing
- Please ensure you use the predestination crossing when crossing the road

All these points are crucial for the health and safety of our tamariki and their whānau.

Thank you for your co-operation and for helping us to keep tamariki safe!



PB4L INFORMATION

Restorative Practice at Whenuapai School

As a PB4L School, we teach the expected behaviours through our PB4L Values and Learner Capabilities. We use Restorative Practice (RP) as a process to provide ways to repair harm and restore relationships between students, and between students and adults. PB4L RP supports schools to build positive, respectful relationships across the whole school community. It also provides schools with a set of best-practice tools and techniques to maintain and restore relationships, and manage behaviour when things go wrong, using a relational approach grounded in beliefs about equality, dignity, mana and the potential of all people.

Restorative Practice and Conferencing uses the stories of those involved in a situation, and the people close to it to:

- explore what has happened and who has been affected.
- hold those who have caused harm accountable for their actions.
- provide support to those who have been harmed, and others involved.

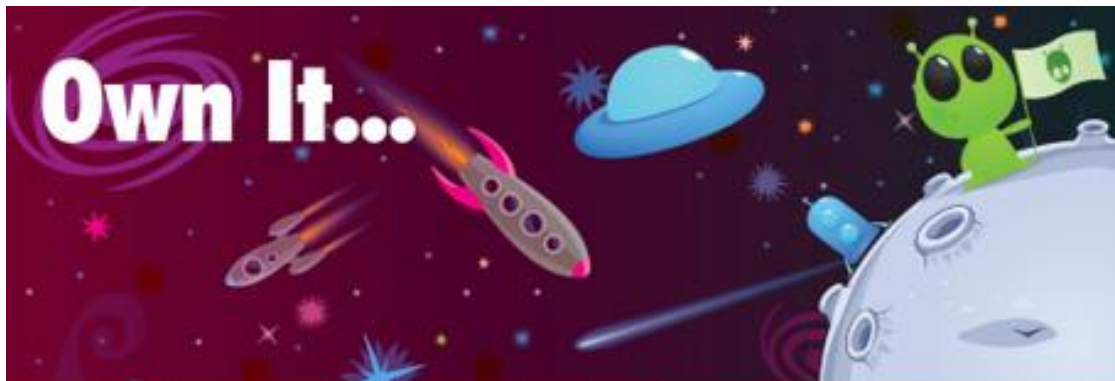
Key to success in this process is remembering that “The problem is the problem, the person is not the problem”. A primary principle of RP is to avoid further destruction of the mana of all participants.

At Whenuapai School, we consistently use the “Own It, Fix It, Learn from It, Move On” Framework. All of our tamariKi are familiar with this framework and it is used consistently across the School. Our data indicates a significant decrease in PB4L incidents, an increase in successful student outcomes, and a notably positive effect on student wellbeing and resilience.

We continue to grow our skills in this area, with a particular focus on building and maintaining positive, respectful relationships across the school community. Our RP framework continues to support conflict resolution, and enables our tamariKi to acknowledge their part within an incident and identify ways to ‘fix it’.



Own It...



Fix It...



Learn from it...

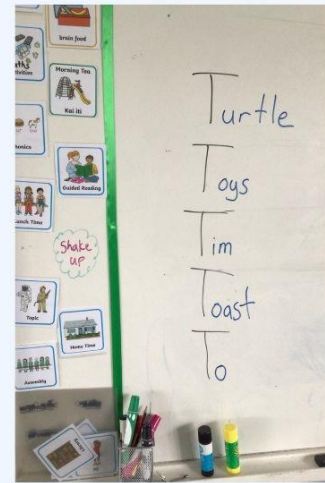


Move on...



Some Kea have
new homes

We've Moved



We welcome to school a new group of children who have started with Mr French in Room 13. They are next door to Whaea Bree and Ms Cornish who have moved from Room 25 and 22. The Kea team have started the term with a bang with lots of hands-on science experiences as we learn about forces, heat, sound, light, seasons, and the solar system.

SENIOR DISCO!



GARDEN TO TABLE SEEDLING SALE

Friday October 20th @ Whenuapai School,
outside the front office (14 Airport Rd, Whenuapai)
8am - 9:30am & 2:30pm - 3:30pm



Please come & support our Garden to Table program!
\$1 Small Seedlings: Lettuce, spinach, cucumber, herbs
\$2 or \$3 per Bigger Seedlings: tomato, marigold,
swan plants, lavender, succulents & LOT's more!!
\$ 5 Avocado and Karaka (Native) tree saplings & flax

Enviroschools

Whenuapai School
Living to Learning

Please don't take our vegetables!

Our students need to harvest them for their cooking lessons.
Thank you!

GARDEN TO TABLE
GROW HARVEST PROTECT SHARE

TERM DATES 2024

TERM 1

MEET THE TEACHER DAY - FRIDAY 2ND FEB

STARTS - WEDNESDAY 7TH FEBRUARY
ENDS - FRIDAY 12TH APRIL



Waitangi Day - Monday 6th February
Good Friday to Easter Monday - 24th March - 01st April
Easter Tuesday (a school holiday) - 02nd April

TERM 2

STARTS - MONDAY 29TH APRIL
ENDS - FRIDAY 5TH JULY

Kings Birthday - Monday 3rd June
Matariki - Friday 28th June



TERM 3

STARTS - MONDAY 22ND JULY
ENDS - FRIDAY 27TH SEPTEMBER



TERM 4

STARTS - MONDAY 14TH OCTOBER
ENDS - FRIDAY 20TH DECEMBER (12.40pm)

Labour Day - Monday 28th October

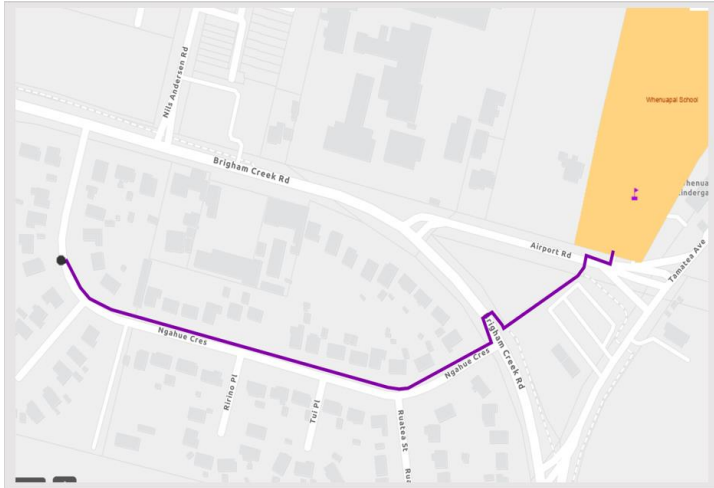


WHENUAPAI SCHOOL WALKING SCHOOL BUS

The walking school bus (WSB) is a great way to travel to school and avoid the congestion! It's also a wonderful way for school families in the community get to know each other.

The WSB will leave from 9 Ngahue Cres at 8.20am every Tuesday heading east (see the route below).

If you'd like to join the walking school bus, please contact Michaela White at michaelapamela@gmail.com or 021 186 5876 for more information.



For more information about starting a WSB at your school visit AT.govt.nz/walkingschoolbus or email us at walkingschoolbus@aucklandtransport.govt.nz



TERM 4 – Lunchtime Football



FOOTBALL LUNCH PROGRAMME

KIWI KICK STARS

Whenuapai school

FUN FOOTBALL SESSIONS FOR BOYS AND GIRLS!!

TERM 4

Our awesome programme gets kids exercising through super fun activities based around football and storytelling. Kids build confidence while improving their motor skills and coordination, Learning how to play with others, focus on problem solving.

Our friendly, experienced coaches have a hands-on, relatable approach and a passion for fun! Everyone's a winner at Kiwi Kick Stars!

Where: Whenuapai School fields
When: Wednesdays (starts on Wednesday 11th October)
Time: Lunchtime
Cost: \$135 per term (10 weeks)
 Second child discount of 10% applies!
TO REGISTER GO TO WWW.KIWIKICKSTARS.COM

sKids Before & After School Care

Daily Activities After-School Programme

5 to 13 years old

Monday	Tuesday	Wednesday	Thursday	Friday
<p>Games</p> <p>From board and card games to balloons and party games; we will have a mix of these fun activities every week!</p>	<p>Sports / Active</p> <p>Get moving with sKids. We will have different activities each week such as sports and anything to get active.</p>	<p>Arts & Crafts</p> <p>The kids will have fun with a variety of arts and crafts while learning to get creative.</p>	<p>Challenge Day</p> <p>Have you got the skills to complete our challenges? Join us at sKids for a fun challenge afternoon.</p>	<p>Music, Dance & Free Play</p> <p>Fridays are a time to have fun and relax with an opportunity to participate in a variety of exciting activities.</p>

General After-School Schedule

3.00pm – 3.30pm	Healthy afternoon snack provided
3.30pm – 4.00pm	Homework/Reading
4.00pm – 5.00pm	Exciting scheduled activities
5.00pm – 6.00pm	Fun activities

Email: whenuapai@skids.co.nz | Onsite Mobile: 021 174 8473 (Only checked during opening hours)

Book now at www.skids.co.nz and click on Book Now

CLICK HERE TO BOOK



School Docs

Policies and Procedures

For our Policies and Procedures please visit:

SchoolDocs at: www.schooldocs.co.nz/

User – whenuapai Password – airport

Copyright: Except where stated, the content on this site is the copyright of SchoolDocs Ltd. It may not be reproduced without written permission from SchoolDocs.

TERM 4 Review Topic Open Now:

Curriculum and Student Achievement

PLEASE CLICK HERE



GENERAL NOTICES

2023 Parent Handbook

There is a Parent Handbook available on our school website with lots of useful information. You can check it out by clicking on the following link:



<https://www.whenuapai.school.nz/information/general-admin/>



CLICK HERE - To join our Whenuapai School Parents Page!



Come and enjoy performances by local artists, yummy food and don't forget to dress up as there will be prizes !j

YOU ARE INVITED TO Diwali

at the sunderland lounge
4th November 5pm onwards
Cost: Cans to donate to salvation army



Gently Loved Markets
Just Kids!

**9AM - 12PM
SUNDAY 29TH OCTOBER**

Waimauku War Memorial Hall
24 Waimauku Station Road

Free Entry

A range of stalls selling preloved baby to kids' clothes, toys, accessories, nursery items and more

FIND US AT @GENTLYLOVEDMARKETSNZ



MUSIC LESSONS at Whenuapai School

*Would your child like to learn to play music?
Would you like in-school lessons with qualified music teachers?
Enrol your child in music lessons at Whenuapai School!*

Gloria has a Bachelor of Music and has tutored in schools in Colombia, the UK, and for the past five years with MusiqHub here in Auckland. Gloria offers music lessons in guitar, ukulele, and keyboard/piano, clarinet, flute, recorder, saxophone and trumpet.

For more information, contact
Gloria Arboleda Martinez
0274 422 654 • gloria.arboleda@musiqhub.co.nz



Give diving a try

Diving is fun, dynamic and a fast growing sport which helps develop agility, strength, co-ordination and deep water confidence. This term your child had the opportunity to spend an hour with an Olympic athlete and have a small taste of what diving is like. Following on from this every child gets the chance to try diving for FREE.

- professional coaching in a supportive environment
- no experience necessary but must be able to swim in deep water

We have classes running out of both Glenfield Pool and West Wave. Register for your free trial at www.aucklanddiving.co.nz. We also have a brand-new gymnastics and acrobatic fun area at West Wave Pool, ready for some fun exciting new activities. Come along and get involved!

Visit our website for more information and to register



Supported by
BARFOOT & THOMPSON CUSTOM-PAK

www.aucklanddiving.co.nz

Your children are amazing already. We just help them prove it.

numberworkswords.com/nz
NorthWest Ph 416 3123

NumberWorks 'nWords | TUITION CONFIDENCE RESULTS

ENGLISH & MATHS
Free assessment Book now!

[Click here for a free assessment and trial lesson.](#)

- Email: northwest@numberworks.com