



# WHENUAPAI SCHOOL NEWSLETTER

14 Airport Road, Whenuapai Phone: 09 416 8779 Email: [office@whenuapai.school.nz](mailto:office@whenuapai.school.nz)

**30 AUG 2022**

TERM 3 - WEEK 6

## DATES FOR YOUR DIARY

**Mon 29 Aug – Fri 2 Sept**  
Scholastic Book Fair

**Tuesday, 30 August**  
ICAS Maths

**Wednesday, 31 August**  
Book Parade at 9.30am

**Thursday, 1 September**  
Year 5/8 NW Cross Country

**Friday, 2 September**  
Friends of Whenuapai  
Race Night  
Starts at 6.30pm

**Monday, 5 September**  
Kiwi Comp – Spelling Bee

**Tuesday, 6 September**  
Senior Campus (Trig Road)  
Community Consultation  
Evening – 7.00pm

**Wednesday, 7 September**  
Voting closes at 4.00pm

## School Calendar

[CLICK HERE](#)

## SCHOOL BOARD MEETING

**Wednesday, 14 September**  
6.00pm in the staffroom

## TERM DATES

### Term 3

25 July – 30 September





### Term 4

17 October – 20 December

# PB4L

POSITIVE BEHAVIOUR  
FOR LEARNING

## OUR SCHOOL VALUES

-  Respect Self
-  Respect Others
-  Respect Learning
-  Respect Environment

Tēnā koutou,

The start of Spring is just around the corner. I have to admit, I am loving the longer days and warmer weather. Last weekend I went to the beach for a walk, for the first time in months, and there were people swimming and sunbathing. I hope you are managing to find time to enjoy what our local environment has to offer.

I was talking with a colleague a couple of weeks ago about the continual impact of COVID. We came to the realisation that this is the longest period of time that tamariki have attended school without interruption for over 2 years. Whilst this is fantastic from a learning point of view, we both recognised that our tamariki are showing increased signs of fatigue. At Whenuapai, we recognised an increasing number of our tamariki are experiencing challenges with their problem solving, social and emotional skills. These feelings are being exhibited through disagreements with friends, being quick to become angry and upset, and an increase in altercations between students.

To support our tamariki we:

- Continue to model, promote and teach our expected behaviours
- Have increased our positive acknowledgement of the expected behaviours
- Continued to support tamariki who have had a disagreement and work through a restorative process.

And now we are reaching out to you, our parent community, asking for your support.

COVID has disrupted so much in our world and we are slowly adjusting to the new norms. One of the largest changes I have noticed is the increase in the use of online resources for work, learning, relaxation and social interactions. As the year has progressed, we are seeing an increase in disagreements between our older tamariki that initially start from social media and online gaming. We have booked John Parsons <https://www.citizen21.co.nz/> to come and talk with our students, staff and the community about Cyber Safety in early 2023 but in the meantime <https://netsafe.org.nz/> has great resources to start positive conversations at home.

Another factor that is impacting our children's abilities to make good decisions is physical and mental tiredness. For our younger children having to focus all day can be draining. In a typical school day, our tamariki are: learning, playing, interacting, time with others, time alone, problem solving, communication, the list is endless. A good night's sleep is critical to a successful learning day. Great information on sleep and other areas can be found at:

<https://www.healthnavigator.org.nz/health-a-z/c/covid-19-caring-for-kids/>

Finally, our definition of Respect for Others is to:

- Use kind and appropriate words
- Use manners
- Listen to others
- Keep hands and feet to ourselves
- Follow instructions

We would really appreciate it if you could continue to support us by having regular conversations with your tamariki about Respect for Others and what this value would look like throughout their day, this will link into our ongoing lessons.

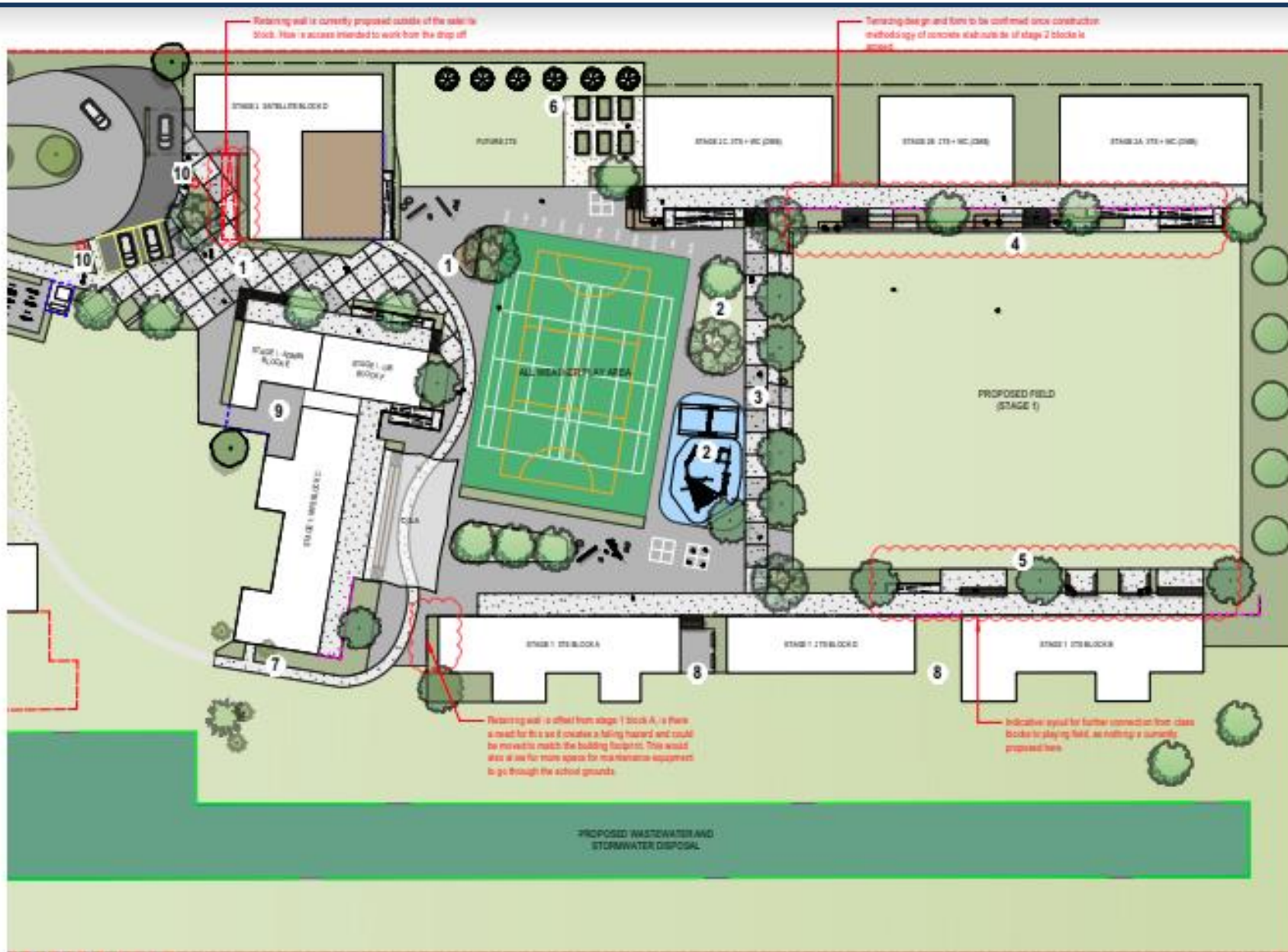
**Whenuapai Senior Campus (Trig Road)** - We are very excited about the opportunity that our new Senior Campus is going to create for our tamariki and their whānau, as well as staff and the wider Whenuapai community. Please come along to our community consultation evening next Tuesday, 06 September 2022 at 7.00pm in the School Hall. We would love to hear your thoughts and feedback on our senior learning programme and school environment. A picture of the proposed school site is attached on Page 2.

**School Board Elections** - A reminder that voting closes at 4.00pm on 07 September 2022. You can post your vote in the free post envelope provided or a ballot box is also available at the school reception during normal office hours.

**Book Week** – Book Week 2022 kicked off yesterday. Please see below for dates and times when the library is open to parents and whānau. Our Book Character Parade is on Wednesday at 9.30am. All whānau welcome.

Have a fabulous week.

Adam Cels



- KEY:**
- Lawn/Field
  - Asphalt
  - Grid parking for parking areas
  - Concrete Finish (Development TBC)
  - Proposed Garden Area
  - Proposed Specimen Trees
  - Proposed Native Wetland Trees
  - Proposed Decking
  - Proposed Seating
  - Proposed Bath for seating to playground
  - Fencing
  - Boundary
  - Feature base dots
- NOTES:**
1. Expansion without entry and softening area to provide a key visual connection to the centre of the school. Concrete parking drawn from narrative of seating, using different concrete finishes.
  2. Two playing areas located within the central corridor between the fields. Providing it as neutral south and west and east through the multiple playing areas.
  3. Central corridor proposed to create visual connections between the proposed stages. Place surface treatments proposed to create entrance.
  4. Tearing to the east of the field to allow for seating and gathering space overlooking the proposed field. Plant materials are proposed to break up seating areas and provide comfortable seating surfaces.
  5. Seating to the east of the field provided through the use of timber counter sunk into the edge of the slab.
  6. Vegetable garden proposed for further outdoor educational. Further outdoor space proposed for additional seating from the west.
  7. Grid based parking of seating proposed to create links to future proposed buildings and provide additional outdoor seating spaces.
  8. Proposed storage/cabinet
  9. Potential location of tree hydrants

**DRAFT**



# CELEBRATING TŪI LEARNING (YEAR 2)

## INQUIRY



**Mā te kimi ka kite, mā te kite ka mōhio, mā te mohio ka mārama. Seek and Discover. Discover and Know. Know and become Enlightened.** Tūi has started learning this term by unpacking the inquiry through the exploration of states of matter and chemistry. Students loved getting hands-on with the experiments and are still talking about their visit from Nano-Girl. For the rest of the term, we will be learning about North America. Using what they learn we will work together to construct some dramatic pieces for our school show!

## MOTAT



In Week 2 we took the students to MOTAT to learn about the changes in the state of matter. The children had a blast making butter as well as POP rockets! It was cool seeing them engage with all the old technologies as well.

## MUSIC THIS TERM



### Drumming and Rakau

Tūi children have been lucky enough to part take in some drumming lessons this term. In Kaitianga time they have been using rakau alongside their waiata.



# SPORT

## Year 5&6 Norwest Netball Tournament

Well done to all the Year 5 & 6 Netball players who represented our school at the Norwest Netball Tournament at the Te Pai courts in Henderson. It was a busy day playing against other West Auckland schools and our teams did really well! Our Year 5 team won 3 out of their 5 games to finish in 5th place (out of 8 teams) and our Year 6 team won 2 out of their 6 games to finish in 7th place (out of 12 teams). Our students played really well together and demonstrated excellent sportspersonship throughout the day. A huge shout out to our wonderful parent volunteers: Odele Nicholas, Alana Hawes and Gina Shirtliff and thank you also to Maddie Torckler and Sarah Bone as the staff in charge.



## PB4L-POSITIVE BEHAVIOUR FOR LEARNING

### OUR SCHOOL VALUES

Whenuapai School is a PB4L School. We teach behaviour through the use of our school values- **Respect Self, Respect Others, Respect Learning and Respect Environment.**

Our PB4L values focus for weeks 6-7 of Term 3 is: **Respect for Learning**

**Setting SMART learning goals**

**Being on time**

**Perseverance**

**Keeping commitments**

It would be wonderful if you could talk to your children at home about our current PB4L focuses.



## WHENUAPAI SCHOOL WHĀNAU ..... CAN YOU HELP US?

As you may be aware, Whenuapai School recently achieved our Bronze Award for the Enviroschools Project. We are very proud of this achievement and are now working towards the Silver Award. As part of this next stage, we are looking at more ways to reduce our plastic usage and one step we are taking is we are beginning the transition of removing our PB4L wristbands.

Of course, we still want to celebrate and reward our tamariki and this is where we want your help, please!

What do you think could be used to replace our wristbands? We are wanting ideas of something environmentally friendly and also cost effective and we would love to hear your comments and feedback.

Please send any ideas you have to [stephanieb@whenuapai.school.nz](mailto:stephanieb@whenuapai.school.nz)

For further information on the Enviroschools Project please visit:

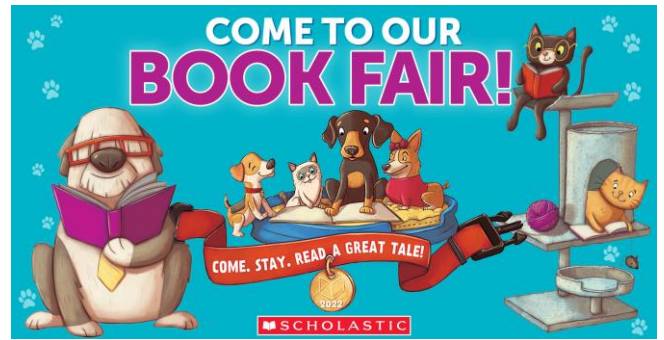
<https://enviroschools.org.nz/>



# BOOK FAIR 2022

The Book Fair is taking place in the library, **THIS WEEK!**  
**Monday, 29 August to Friday, 2 September 2022.**  
We are looking forward to seeing you!

Children will be visiting with their class teacher at a prescheduled time where they will be given wish lists for them to record their favourite items.



Parents are more than welcome to visit the book fair during the following times:

**Monday:** 3.00-4.00pm

**Tuesday:** 8.00-9.00am/3.00pm-4.00pm

**Wednesday:** 8.00-9.00am/3.00-4.00pm

**Thursday:** 8.00-9.00am/3.00pm-5.00pm (special parents/caregivers time with wine & cheese)

**Friday:** 8.00-9.00am/3.00pm-4.00pm

Books will be available for purchase with cash and EFTPOS at these times. A form will be sent home with your children which has order and credit card payment options on the reverse. The brochure is just a taste of what will be available. There will be so many more to choose from at the book fair so please wait to place your order until you and/or your children have had a chance to have a look.

This is a wonderful opportunity to purchase birthday gifts and stocking fillers as the books and novelty items are well priced with lots of variety. Please support us if you can. It's a great way for us to raise funds to benefit your children and the school. We can earn up to 30% commission with your invaluable help.

## Book Character Parade with your favourite soft toy pet! Wednesday, 31 August at 9.30am

Students are able to come to school on this day dressed as their favourite book character and bring their favourite soft toy pet. We will be holding a parade starting at 9.30am and families are more than welcome to attend (dressed up if you wish). There will be spot prizes and prizes for the most imaginative re-creations. The Book Fair will be open for purchases after the parade until the start of morning tea.



## Author Visit: Joan Joass Thursday, 1 September from 9.00am-11.00am

We welcome local author Joan Joass to read her books "Captain Cat" and "The Long Drop" to our junior classes. Joan's books have catchy rhymes and delightful illustrations by famous NZ illustrator Bob Darroch.



For our Policies and Procedures  
please visit SchoolDocs at:  
[www.schooldocs.co.nz/](http://www.schooldocs.co.nz/)

User- **whenuapai**  
Password- **airport**

Copyright: Except where stated, the content on this site is the copyright of SchoolDocs Ltd. It may not be reproduced without written permission from SchoolDocs.

Each term we invite you to give feedback on our school policies and procedures. This term, the focus is on the **Student Wellbeing and Safety** and **Staff Wellbeing and Safety** sections.

If you would like to provide feedback then please follow the instructions below:

All reviewers:

1. Visit the website <https://whenuapai.schooldocs.co.nz/1893.htm>
2. Enter the username (whenuapai) and password (airport).
3. Follow the link to the relevant policy as listed.
4. Read the policy.
5. Click the Policy Review button in the top right-hand corner.
6. Select the reviewer type.
7. Enter your name (optional).
8. Submit your ratings and comments

# SKIDS - Before and After School Care



**skids**  
Whenuapai  
@ the Whenuapai School Hall  
14 Airport Rd, Whenuapai, Auckland

## Daily Activities After-School Programme

5 to 13 years old

<b>Monday Games</b> From board and card games to balloons and party games, we will have a mix of these fun activities every week! 	<b>Tuesday Sports / Active</b> Get moving with skids. We will have different activities each week such as sports and anything to get active. 	<b>Wednesday Arts &amp; Crafts</b> The kids will have fun with a variety of arts and crafts while learning to get creative. 	<b>Thursday Challenge Day</b> Have you got the skills to complete our challenges? Join us at skids for a fun challenge afternoon. 	<b>Friday Music, Dance &amp; Free Play</b> Fridays are a time to have fun and relax with an opportunity to participate in a variety of exciting activities. 
---	--	---	---	---

General After-School Schedule  
 3.00pm - 3.30pm Healthy afternoon snack provided  
 3.30pm - 4.00pm Homework/Reading  
 4.00pm - 5.00pm Exciting scheduled activities  
 5.00pm - 6.00pm Fun activities

Email: [whenuapai@skids.co.nz](mailto:whenuapai@skids.co.nz) Onsite Mobile: 021 174 8473 (Only checked during opening hours)  
 Book now at [www.skids.co.nz](http://www.skids.co.nz) and click on Book Now

For more info email: [whenuapai@skids.co.nz](mailto:whenuapai@skids.co.nz)  
 Book now for Term 3 at - [www.skids.co.nz](http://www.skids.co.nz)



**KIWI KICK STARS**  
Whenuapai school

## FOOTBALL LUNCH PROGRAMME

# KIWI KICK STARS

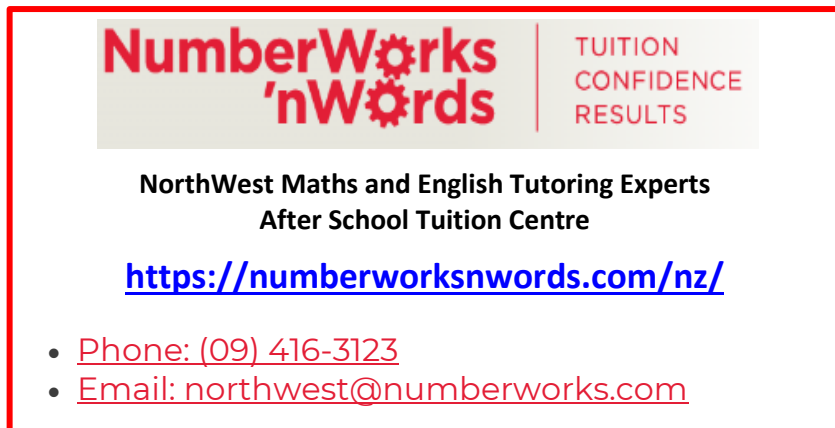
### FUN FOOTBALL SESSIONS FOR BOYS AND GIRLS!!

## TERM 3

Our awesome programme get kids exercising through super fun activities based around football and storytelling. Kids build confidence while improving their motor skills and coordination. Learning how to play with others, focus and problem solve. Our friendly, experienced coaches have a hands-on, relatable approach and a passion for fun!  
 Everyone's a winner at Kiwi Kick Stars!

School: Whenuapai School fields  
 When: Wednesdays (starts on Wednesday 27th July)  
 Time: Lunchtime  
 Cost: \$130 per term (10 weeks)  
 Second child discount of 10% applies!

**TO REGISTER GO TO [WWW.KIWIKICKSTARS.COM](http://WWW.KIWIKICKSTARS.COM)**



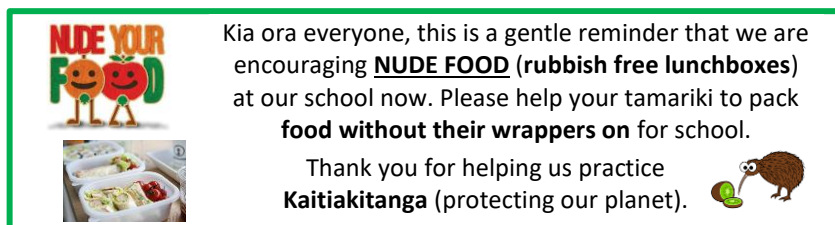
# NumberWorks 'nWords

TUITION  
CONFIDENCE  
RESULTS

NorthWest Maths and English Tutoring Experts  
 After School Tuition Centre

<https://numberworksandwords.com/nz/>

- Phone: (09) 416-3123
- Email: [northwest@numberworks.com](mailto:northwest@numberworks.com)



## NUDE YOUR FOOD

Kia ora everyone, this is a gentle reminder that we are encouraging **NUDE FOOD** (rubbish free lunchboxes) at our school now. Please help your tamariki to pack **food without their wrappers on** for school.

Thank you for helping us practice **Kaitiakitanga** (protecting our planet).



## THE HUNGER BUSTER PROJECT

At Whenuapai School, we have become more aware that some children and families in our community are in need. In response to this need, we have set up a programme called "The Hunger Buster Project" where we encourage families who are in a position to help, to be able to.

This could be by way of a monetary donation or it might be dropping off some of the following lunch items which we can use to keep our amazing tamariki well fed. We ask for food donations of the following items:

**Weetbix, fruit, crackers, muesli bars, bread, margarine, marmite and milo.**

All of these items will help us to make sure hungry tummies are full, which encourages a much more productive learning day for them.

Alternatively, if you would like to contribute financially we have set up a separate bank account for us to purchase such items:  
**ASB 12-3085-0494188-50**

We thank you for any support, little or large. Every bit helps and we know as a community there will be many of you who will want to help in any way you can. Your generosity is very much appreciated!

## CELEBRATING SUCCESS

**We love to celebrate with our amazing taura.**

Many of our taura are involved in clubs and sports outside of school teams and we would love to hear all about it! Please let us know if your tamariki are achieving amazing things after school or on the weekends.

We would love to hear from you!  
 Please email: [pa@whenuapai.school.nz](mailto:pa@whenuapai.school.nz)



**Music Lessons at Whenuapai**  
<https://www.musiqhub.co.nz/teacher/>

## Whenuapai School Programmes

**Bricks for Kids**   
<https://www.bricks4kidz.co.nz/westauckland/>  
 Phone - 09 835 2998 or 027 835 2998  
 Email - [hendersonoffice@bricks4kidz.com](mailto:hendersonoffice@bricks4kidz.com)



## Chess Club

[Click Here for Parent Information PDF](#)  
<https://www.chesspower.co.nz/>  
 Phone - 0800 424 377  
 :mail - [paul@chesspower.co.nz](mailto:paul@chesspower.co.nz)

CRICKET BUT NOT AS YOU KNOW IT!

**NORTH-WEST**

FRIDAYS | 4.00-5.00pm | Ages 10-17  
04 NOV - 09 DEC  
Huapai Domain  
\$20 to register

REGISTER AT: [www.yeahgirls.nz](http://www.yeahgirls.nz) | [auckland@yeahgirls.nz](mailto:auckland@yeahgirls.nz)

Auckland's leading theatre for children

TIM BRAY THEATRE COMPANY

**The Whale Rider**  
By Witi Ihimaera  
Adapted by Tim Bray

LIVE ON STAGE

**AUCKLAND TOUR**  
24 Sept - 12 Nov  
[timbray.org.nz](http://timbray.org.nz)

**FREE!!!**

TUESDAYS  
3:30-4:30PM  
ALL OF  
TERM 3!  
@ HPSS  
COURTS

**HPSS SKATEBOARDING CLUB**

**Toothbrush & Toothpaste Fundraiser**

Shout out to Fraser Dental Hobsonville who has donated \$1,500 worth of Bamboo Toothbrushes (adult and children's) and Colgate Total Toothpaste to support our 2022 fundraising efforts.

[CLICK HERE TO PURCHASE VIA KINDO](#)

Items will be delivered to students each Wednesday!

**Fraser Dental**

**Kumeū Cricket Club Announcement**

**ANZ**

Apply now for an 22/23 season ANZ Cricket Grant.

ANZ Cricket Grants has set up a \$50,000 fund to help subsidise Kiwi kids' club cricket fees. Successful applicants will receive up to \$80 towards their fees, via a voucher with a unique code. Simply redeem it when you register for the season. A maximum of two children per family can get the subsidy.

Get your kids' cricket season underway by applying [www.https://www.anzcricketworld.co.nz/grants/](https://www.anzcricketworld.co.nz/grants/)

<https://www.anzcricketworld.co.nz/grants/>

Upper Harbour Local Board

Upper Harbour Ecology Network

Invitation to

Meet your Local Board candidates

Learn what our new candidates want for the Upper Harbour region and to answer your questions about **environmental issues**

Tuesday Sept 6th  
7.30pm  
Hobsonville Point Secondary School Hall

**OPENDAY**

WAITAKERE BMX

25<sup>th</sup> Sept 2022  
10:30 - 1:30pm

**TRY BMX FOR FREE**

**TIMETABLE**  
10:30 Sign-in, Gear Up, Ride  
11:30 Racing Demo  
12:30 Jumping Demo  
1:30 Lolly Scramble

**ON THE DAY**  
Canteen will be running with Burgers, Chips, Drinks, Slurpees & Gluten Free options.

**WHAT TO BRING**  
A Bike: BMX, Balance, Mountain, they are all welcome. Protection: Long Pants, Long Top, Shoes, Gloves & Helmet.  
Limited Race Bikes & Full Face Helmets are available for use on

KEY CONTACTS		ONLINE PAYMENTS
Principal – Adam Cels	<a href="mailto:acels@whenuapai.school.nz">acels@whenuapai.school.nz</a>	Any queries please email Mr Tony Hitchcock at: <a href="mailto:thitchcock@whenuapai.school.nz">thitchcock@whenuapai.school.nz</a>  <b>Bank Account details:</b> 12-3085-0494188-00 <b>Reference:</b> Students Name <b>Details:</b> The activity the payment is for  If you pay online for more than one activity or pay for more than one student and various activities, please email Tony detailing what the payments are for.  <b>Payments can also be made via our online school shop at <a href="http://mykindo.co.nz">mykindo.co.nz</a></b>
Deputy Principal – Molly Fletcher	<a href="mailto:mfletcher@whenuapai.school.nz">mfletcher@whenuapai.school.nz</a>	
Principal's PA – Jo Wright	<a href="mailto:pa@whenuapai.school.nz">pa@whenuapai.school.nz</a>	
Learning Support Coordinator – Jill MacKenzie	<a href="mailto:lsc@whenuapai.school.nz">lsc@whenuapai.school.nz</a>	
HOD Sport – Greg Berry	<a href="mailto:gregb@whenuapai.school.nz">gregb@whenuapai.school.nz</a>	
Board of Trustees	<a href="mailto:wsbot@whenuapai.school.nz">wsbot@whenuapai.school.nz</a>	
PTA	<a href="mailto:pta@whenuapai.school.nz">pta@whenuapai.school.nz</a>	
SKIDS After School Care	<a href="mailto:whenuapai@skids.co.nz">whenuapai@skids.co.nz</a>	
<b>Team Leaders</b>		
Year 0-1 – Melissa Parkins	<a href="mailto:melissap@whenuapai.school.nz">melissap@whenuapai.school.nz</a>	
Year 2 – Rebecca Archer	<a href="mailto:rebecca@whenuapai.school.nz">rebecca@whenuapai.school.nz</a>	
Year 3 – Olivia Mead	<a href="mailto:oliviam@whenuapai.school.nz">oliviam@whenuapai.school.nz</a>	
Year 4 – Stephanie Brook	<a href="mailto:stephanieb@whenuapai.school.nz">stephanieb@whenuapai.school.nz</a>	
Year 5 - Paige Chellew	<a href="mailto:paigec@whenuapai.school.nz">paigec@whenuapai.school.nz</a>	
Year 6 – Chris Groen	<a href="mailto:chrisg@whenuapai.school.nz">chrisg@whenuapai.school.nz</a>	
Year 7-8 – Karl Ganda	<a href="mailto:karlg@whenuapai.school.nz">karlg@whenuapai.school.nz</a>	

**WHENUAPAI SCHOOL**  
14 Airport Road, Whenuapai  
Auckland 0618, New Zealand  
P: 09 416 8779  
W: [www.whenuapai.school.nz](http://www.whenuapai.school.nz)