

Whenuapai School

New Entrant Information Pack



'Inspiring discovery and empowering learners'

14 Airport Road
Whenuapai
Auckland 0618

Ph: 09 416 8779
E: office@whenuapai.school.nz



Welcome to Whenuapai School

The partnership between home and school is crucial to ensuring a student's success.

A quality education is the key to your child's future. Together we have a powerful influence on how your child will picture themselves as learners and achievers for the future. We want children to look back at Whenuapai School and say that it prepared them well for a modern world. We need to set challenges and design pathways that make learning powerful, meaningful and relevant. Whenuapai School looks to the future by building on the best of the past and incorporating this with the knowledge of the present. We also seek new ideas and carefully evaluate changes that will lead to a better tomorrow.

Transition to school can be a big step for some children. It can be challenging for children to concentrate, sit still, follow instructions and make new friends. Please keep this quote in mind, "All children learn but not in the same way and on the same day".

Melissa Parkins

Team Leader Year 0-1

melissap@whenuapai.school.nz

Jenny Cornish

New Entrant Transition Leader

jennyc@whenuapai.school.nz



School Donations

Thank you for choosing to send your children to Whenuapai School next year. We are looking forward to 2022 being a year full of opportunities, experiences and learning adventures.

To aid us in providing your children with the best learning environment we depend on your school donations. Your donations go directly towards reading resources, computer software, mathematics equipment, photocopying and essential operations and materials for the learning process.

The 2022 donation is set as follows: \$180 if you have one child at the school or \$330 if you have two or more. Your tax refund would be:

1 child	\$180 (tax refund \$60)
2+ children	\$330 (tax refund \$110)

In addition, there is a further donation to cover classroom consumables such as paints, coloured paper, string, classroom stationery (to minimise the additional stationery each child requires) and ICT.

In 2022 the classroom donation is:

Year 0-3: \$60 (tax refund \$20)

Year 4-8: \$90 (tax refund \$30)

To help us plan for next year, we would appreciate it if you would advise us how you intend to pay your donation by returning the form below. To make it as easy as possible we have a number of payment options available including lump sum, split payment over four terms, monthly payment and weekly payment.

We are happy to discuss options and/or assist with setting up an automatic payment.

Your donation to the school is tax deductible. Just download form IR526 from the Inland Revenue website and send it off to IRD with your donation receipts attached.

Should you have any queries please contact Mr Tony Hitchcock by email at: thitchcock@whenuapai.school.nz

Bank Account details: 12-3085-0494188-00

Reference: Students Name

Details: the activity (i.e. Donation)

We appreciate your on-going support and involvement in your child's education.



Some tips for preparing your child for school

It would be helpful if your child could:

- Write his/her name or recognise it
- Listen to a story and talk about it. The greatest preparation a child can have for reading/writing learning is book experience.
- Recognise some letters possibly at least those in their own name
- Handle pencils/crayons. Be able to draw a simple picture.
- Recognise colours by name
- Count to ten
- Use scissors to cut simple shapes from paper
- Recognise basic shapes
- Be able to express their needs to the teacher
- Can put on and secure their own shoes
- Independently use the toilet



Handwriting

In Primary Schools, the aim of teaching handwriting is to teach each child to write legibly, fluently without strain, and with sufficient speed for all practical purposes.

In the Junior School, our main objectives are to help children establish the correct pencil grip, to begin letters at the correct point, and to form letters and numerals correctly with increasing speed and endurance.

If your child is keen to write, it is most helpful if they learn the correct letter formations. Attached is a copy of lowercase and uppercase letters as a guide to use with your child. They are taken from the New Zealand Curriculum. Please remind your child to write words in lowercase letters rather than capitals. In addition we follow the Casey the Caterpillar programme. We have included some information about the language we use when forming letters.

Please encourage your child to hold their pencil correctly and to form letters consistently as “practice does not make perfect; it only makes permanent” like any habit, it is very difficult to change when it is well established.



Letter / Shapes

	open mouth		tall stick		short stick
	hanging stick		tunnel leaf		gate - close it
	twig		feeler		possum tail
	grasshopper legs		twirly vine		small sloping sticks
	half tunnel		snake shape		ladybug spot

a open mouth short stick

b tall stick, gate - close it

c open mouth

d open mouth, tall stick

e twig, open mouth

f feeler, twig

g open mouth, possum tail

h tall stick, tunnel

i short stick, spot

j possum tail, spot

k tall stick, grasshopper legs

l tall stick

m short stick, tunnel, tunnel

n short stick, tunnel

o wide open mouth

p hanging stick, gate-close it

q open mouth, hanging stick, sloping stick

r short stick, half tunnel

s Sammy snake

t short stick, twig

u gumnut cup, short stick

y sloping stick

w sloping stick, sloping stick,
Sloping stick, sloping stick

x sloping stick, sloping stick
crossed

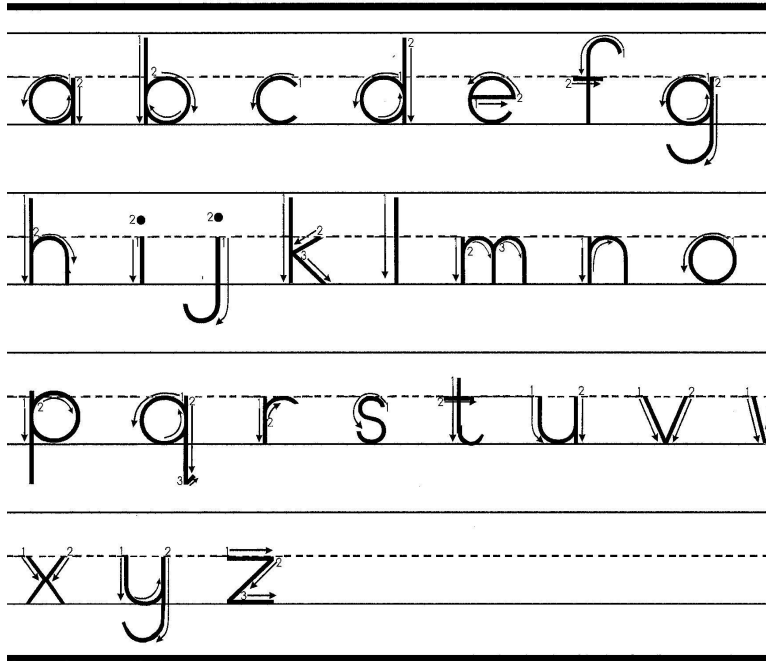
y gumnut cup, possum tail

z twig, sloping stick, twig

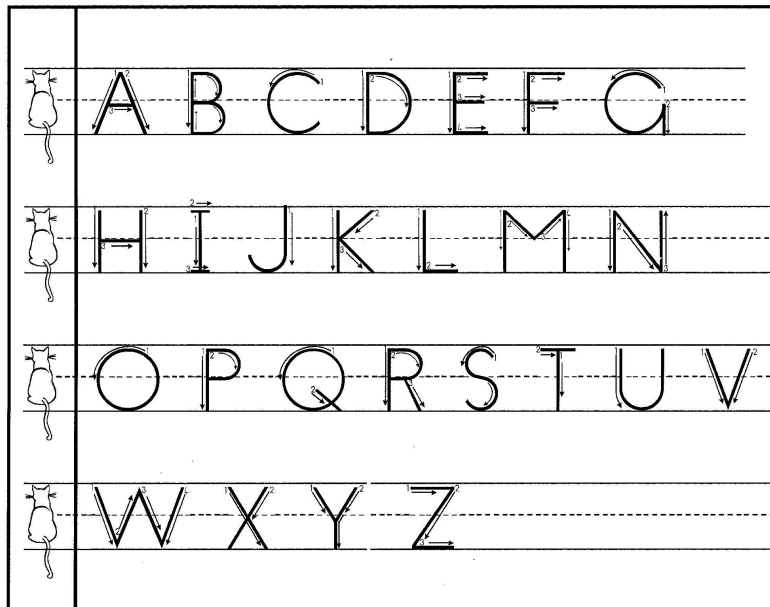


Beginning Points and Directions of Movement

Lower Case



Upper Case





Uniform Price List 2022

Our school uniform is available online on the Argyle Schoolwear website:

www.argyleonline.co.nz/shop/auckland/whenuapai-school

Item	Recommended Quantity	Price
Year 0-6 Polo Shirt	2-3	\$34.00
Year 7-8 Polo Shirt	2-3	\$40.50
Skort	1-2	\$40.50
Shorts	1-2	\$31.00
Fleece Jacket	1	\$61.00
Bucket Hat *	1	\$14.50
Cap *	1	\$12.50

* School hats are also available for purchase at the School Office.

Year 5-8 Sports Uniform

Compulsory for all students in Years 5-8. Available for purchase at the school office.

Sports Shirt (with logo) and Sport Shorts	1	\$65.00
---	---	---------

Please note:

- Hats are compulsory in Term 1 and Term 4.
- Any plain navy shorts, skorts and hats may be worn.
- While mufti rain jackets can be worn in winter/bad weather, the school fleece jacket is compulsory. Hoodies, sweatshirts and other mufti items are not to be worn.



Uniform Standards

Rationale:

- Appropriate clothing enables students to participate safely in the full range of activities typical in a school day.
- Considered choices support positive health and hygiene practices.
- Pride and presentation of students presents a positive image of the School and the high standards it upholds.

Standards:

- **Safety**
- Jewellery: a watch and plain ear studs may be worn as part of our uniform. Jewellery can easily get caught in a myriad of ways resulting in injury.
- A range of footwear is permitted, except jandals and slides, as children can easily trip over with these. Gumboots may only be worn to and from the classroom and not inside.

- **Health and Hygiene**
- Plain hair bands. Students with mid - long hair are encouraged to tie their hair back. This may reduce the spread of head lice in classrooms. Students attending Technology at Taupaki are required to wear their hair tied back for health and safety reasons. Teachers may require students to tie their hair back if students are preparing food or are involved in an activity where it is deemed appropriate.
- A school hat is compulsory in Terms 1 and 4.
- Additional items of warmth in the winter may be worn (gloves/hat/scarf).

- **Pride**
- All students must wear the appropriate sports uniform when representing the school.
- Under shirts must be tucked in and not visible.
- Boys: Navy shorts or trousers with a Whenuapai logo polo shirt. Please note: Year 7 and 8 students wear a blue polo shirt. Whenuapai School polar fleece sweatshirt.
- Girls: Navy skort, shorts or trousers with a Whenuapai School polo shirt. Please note: Year 7 and 8 students wear a blue polo shirt. Whenuapai School polar fleece sweatshirt.
- Make-up is not to be worn at school.



Year 0-1 Stationery List for 2022 (Terms 1 & 2)

Stationery packs can be purchased online from Office Max (OM) ([click here](#)) or items can be purchased from stores such as Warehouse Stationery (WS), The Warehouse, Whitcoulls etc.

Please name all books and your book bag. All other stationery items will be collected by the classroom teacher. Please bring your child's stationery to school on the first day.

Quantity	WS Books (please name)	OM Books are also known as:
2	WS Exercise Book 1U4 12mm Ruled 24 Leaf	OM JPB Junior Picture Story Book 14mm Ruled 32 Leaves (Writing)
1	WS Exercise Book 1LWB5	OM JWB Junior Writing Exercise Book 14mm Ruled 32
1	WS Exercise Book Learn To Write 7mm Ruled 32 Leaf Red	Warwick LWB Learn to Write Exercise Book 14mm Ruled 32 Leaves
3	Project Books (Paste Book)	
1	1A8 Exercise Book (Poem Book)	
1	3F1 Notebook	
1	Home Reading Book Bag	
1	Packet of clothing labels to name all uniform items (*not incl. in OfficeMax Pack)	
Quantity	Shared Resources (collected by the classroom teacher)	
1	12 Pack of Jovi	
4	Glue Sticks	
4	Whiteboard Pens (Black or Blue)	
5	HB Pencils	
<p>* Payment of \$18.00 for two PR1ME Maths student practice books. To be paid online through Kindo at www.mykindo.co.nz or at the School Office</p> <p>PR1ME is our core maths program, in which children work through two workbooks in one year to cover all areas of the mathematics curriculum.</p>		



Bus Route Information

We hope these documents will help to answer most of your questions about the bus system.

The collection points along the routes are dependent on traffic, so it is difficult to give timings along each route. We suggest that students are brought to school on the day of their first ride home, and catch the bus home. It is recommended that parents come to school for 3.00pm on this day and follow the bus home. This way, timings for drop off and collection points can be worked out in person with the bus driver.

Although we work with Ritchies to provide the most reliable service that we can, we can not guarantee the arrival time of any bus. There may be occasions where circumstances beyond our control result in the bus failing to arrive. All parents are advised to work out a contingency plan to cover this eventuality. Having said that, we do try to work with Ritchies and parents to send a replacement bus as quickly as possible, however this can take time to reach the students.

Responsibility for students who travel on the bus

Before students board the bus on their journey from home to school, they are the responsibility of their parents/caregivers. After they board the bus, they are the responsibility of the Bus Company. When they disembark at school they become the responsibility of the School.

Before they board the bus for the journey home and the students are on the school grounds, they are the responsibility of the School. After they board the bus, they are the responsibility of the Bus Company. As they leave the bus, they become the responsibility of their parents/caregivers.

It is the parent's responsibility to inform us if their child is going to be taking the school bus, by filling out the electronic form 'Bus Change Form' which is located on the front page of the Whenuapai School Website or by emailing the school office on office@whenuapai.school.nz. Any changes need to be made on this form prior to 1.30pm, so information can be gathered as to who is catching the bus that day.

Students need to ensure their name is ticked off on the Bus List sheet, by a Bus Monitor, before they enter the bus each afternoon. If the School has not been informed that a student is catching the bus, and their name is not written on the sheet, then they will not be able to take the bus that day. If this occurs, their parents will be called and asked to pick them up from School.



Route description:

Morning Run	Afternoon Run
<p>8:20 am Depart Kauri Road Straight Kauri Road Right Kingsway Road Right Ferry Parade Left The Terrace Right Kingsway Road Right Kauri Road Left Puriri Road Left Waimarie Road Right Punga Road Right Karaka Road Right Totara Road Right Waimarie Road Right Punga Road Right Karaka Road Left Totara Road Left Brigham Creek Road Left Airport Road 8:40 am Drop off Whenuapai Primary</p>	<p>2:55 pm Depart Whenuapai Primary Exit Bus Bay Right onto Airport Road Right Brigham Creek Road Right Totara Road Right Waimarie Road Right Punga Road Right Karaka Road Right Totara Road Right Waimarie Road Left Puriri Road Right Kauri Road Left Kingsway Road Right Ferry Parade Left The Terrace Right Kingsway Road Left Kauri Road 3:15 pm Last Drop off bus stop on Kauri Road</p>

Ritchies North Shore Depot are our School Bus provider

www.ritchies.co.nz

This Enrolment pack includes a Bus Route Map which has been given to us by Ritchies as a guide.



Behavioural expectations of students on the School bus

- Stand well back from the road and line up in a single file.
- Wait until the bus has come to a complete stop before getting your name ticked off the Bus List and then approaching and boarding.
- Use the handrails and safety measures when it is wet and boarding the bus.

Older students are to help the younger students to ensure safety, if necessary.

Use designated stops

- It is the responsibility of students to disembark and board at their correct stop.

Whilst on the bus

- When I am a seated passenger, I will remain in my seat for the whole journey.
- I will not eat on the bus or throw anything inside or out of the bus.
- If I am a standing passenger, I will stand quietly and not push or move around the bus.
- I will respect other students and their property at all times (this includes pushing, verbal or physical abuse, or any other behaviour that may distract the driver).
- I will respect the property of the bus operator at all times (eg. Refraining from standing on seats or vandalising the vehicle in any way).
- I will not engage in any behaviour that could put the driver or other students at risk.
- I will observe the requirements and instructions of the bus driver and the teacher/s responsible for bus duty at all times.
- I understand that any damage I cause to the bus will result in my caregiver being billed for the cost of repairs.

Getting off the bus

- If seated, do not stand to get off the bus until the bus has come to a complete stop and the driver has signalled that you have arrived at your stop, or destination. Only at this point may you stand and get off the bus.
- Get off the bus in an orderly manner (no pushing or shoving).
- Do not cross the road in front of the bus; wait until the bus has moved away and it is safe to do so. Use crossings or traffic lights if available.

Please ensure you complete the School Bus Code of Conduct!



Dental Service

The Dental Service for our School is provided by Westgate Clinic, phone number 832-2116 and Enrolments for the Dental Service can be done online via the ARDS public website www.ards.co.nz.

Policies and Procedures:

Follow the instructions below to access the school's Policies and Procedures:

- www.schooldocs.co.nz
- Type the school name to find Whenuapai School
- Username: whenuapai
- Password: airport



KEY CONTACTS

Senior Leadership

Position	Name	E-mail
Principal	Adam Cels	acels@whenuapai.school.nz
Deputy Principal	Molly Fletcher	mfletcher@whenuapai.school.nz

Other Key Contacts

Position	Name	E-mail
Year 0-1 Team Leader	Melissa Parkins	melissap@whenuapai.school.nz
Learning Support Coordinator	Jill MacKenzie	lsc@whenuapai.school.nz
HOD Sport	Greg Berry	gregb@whenuapai.school.nz
Admin Manager	Tony Hitchcock	thitchcock@whenuapai.school.nz
Principal's PA	Jo Wright	pa@whenuapai.school.nz
Receptionist	Claire Brain	office@whenuapai.school.nz
Board of Trustees	Michael Farac (Chair)	wbot@whenuapai.school.nz
Parent Teacher Association	PTA	pta@whenuapai.school.nz
sKids After School Care	sKids	whenuapai@skids.co.nz