



WHENUAPAI SCHOOL NEWSLETTER

14 Airport Road, Whenuapai Phone: 09 416 8779 Email: office@whenuapai.school.nz

25 FEBRUARY 2021

DATES FOR YOUR DIARY

Friday, 26 February

9.15am – Year 5-6 Assembly
Northwest Tag

1-4 March

Year 7/8 Aquatic Safety

2-4 March

Year 2/3 Beach Education

Wednesday, 3 March

7.00-8.30pm – PTA Wine
and Cheese Evening

Monday, 8 March

Northwest TBall

8-11 March

Years 1&4 Aquatic Safety

9-11 March

Year 5/6 Beach Education

Friday, 12 March

Teacher Only Day
No School!

2-6 April

Easter Holidays – No School

Friday, 16 April

Last Day of Term 1

BOT MEETING DATES

6.00pm - Wed, 24 March

6.00pm – Wed, 26 May

A WORD FROM OUR PRINCIPAL...

Tēnā koutou,

Wow, what an interesting two weeks it has been since our last newsletter. A heartfelt thank you to all of our children, parents, caregivers and whānau for supporting us through another period of lockdown. With three days spent at Level 3 and a further five days at Level 2 we are now back at Level 1 as of 11.59pm Monday night. We are extremely proud of the adaptability and reliance of our students. Thank you also to our wonderful staff members for their dedication and hard work over this period.

As we continue to navigate this unknown time with Covid-19 we ask that at all times, please continue to scan QR codes and monitor closely for illness within your whānau. Our focus, as always, will be to support the learning, safety and wellbeing of our young people and we continue to be here to support you as well.

We have listened to your feedback regarding the week ahead emails previously sent out by each of our Team Leaders and this year, we will be combining all team information on the one week ahead email. We hope you enjoy this change.

Earlier this year our staff took part in some PLD (Professional Learning Development) about Restorative Practices. This is led by the Ministry of Education and ties in well with our PB4L (Positive Behaviour for Learning) work. Restorative Practices focuses on building and maintaining positive respectful relationships. Here is some further information: What is PB4L Restorative Practice? [Click here.](#)

The national curriculum for schooling will be refreshed over the next five years so that it is clearer, more relevant, easier to use, and more explicit about what learners need to understand, know and do. [Click here](#) to read the announcement made by Associate Ministers of Education, Jan Tinetti and Kelvin Davis on 11 February 2021.

The next two weeks are going to be extremely busy for staff and children in particular with water safety lessons both in the pool and at the beach. Thank you in advance to the many parent helpers that make these trips possible. Without you we couldn't offer these experiences to our students. We are conscious that with these EOTC (Education Outside of the Classroom) trips, it is an expensive time of year and we thank you for your support. Team Leaders have included in their trip notices, information about various payment options.

A reminder, that if your child is going to be absent, please notify the school office through either the SchoolApp, by phoning 09 416 8779 or by emailing office@whenuapai.school.nz. You can also fill in and submit a form under the 'contact us' tab on our school website www.whenuapai.school.nz with your child's name, room number, absence date/s and reason for the absence.

Please remember our doors are always open.

*Ko te ahurei o te tamaiti arahia o tatou mahi
Let the uniqueness of the child guide our work*

*He iti hau marangai E tū te pāhokahoka
After the storm, the rainbow appears*

Ngā mihi nui,
Raewyn Matthys-Morris, Principal



This year we are using our new student management system, **HERO** for sharing information, updates and student reporting.





If you haven't already done so, please sign up to HERO using the following link:

<https://hero.linc-ed.com/parents/>

PB4L

POSITIVE BEHAVIOUR FOR LEARNING

OUR SCHOOL VALUES

-  Respect Self
-  Respect Others
-  Respect Learning
-  Respect Environment

Whenuapai School presents...

PTA WINE & CHEESE EVENING



ALL PARENTS AND CAREGIVERS WELCOME

JOIN US TO HEAR MORE ABOUT OUR SUPPORTIVE PTA AND COME ALONG TO FIND OUT HOW YOU CAN GET INVOLVED.

Wednesday 3rd March 7pm in the staffroom.

Room for everyone to be a part of our school community!



We are starting up a Lego club at school during lunch times and we would love some donations of Lego for children to use for this.

Please send donations to Room 18. Thank you!

MARRZIPAN

**Self-Confidence classes at Whenuapai
Space Available for Term 1 2021!**

Marrzipan have gained a huge reputation in New Zealand for the development of shy children, especially those with anxiety, autism and selective mutism.

Saying that, this is a class for the super crazy and dramatic types too, as we focus on positive leadership and social skills. Our classes focus on inner and outer self-confidence, and are super fun and exciting for children.

Parents are kept up to date with weekly emails about what's been covered in class and why, as well as what you can work on at home. We have two awesome showcases at the end of every term too, so you can see your child's development first hand as they perform in one of our termly productions.

Our classes will be running on:
Thursday, at 10:05-11:05 in the hall.

Spaces are limited to 14 students, to sign up for a non-obligatory trial lesson.

Please register your interest by:
emailing: manon@marrzipandrama.co.nz
or calling 0272206030. See you there!



MUSIC LESSONS at Whenuapai School

Would your child like to learn to play music?
Would you like in-school lessons with qualified music teachers?
Enrol your child in music lessons at Whenuapai School!

MusiqHub is holding a Have-A-Go Day on Thursday 11th February in the Hall, where your children can try out an instrument and you can meet the music tutor Gloria Arboleda Martinez.

Gloria has a Bachelor of Music and has tutored in schools in Colombia, the UK, and for the past four years with MusiqHub here in Auckland. Gloria offers music lessons in guitar, ukulele, keyboard/piano, clarinet, flute, recorder, saxophone and trumpet.

WHAT? Have-A-Go Day at Whenuapai School
When? Thursday 11th Feb
Times? 8.00am - 9.00am
2.30pm - 3.30pm
Where? Hall

For more information, contact
Gloria Arboleda Martinez
0274 422 654 • gloria.arboleda@musiqhub.co.nz

MUSIQHUB
PLAY SMART



Reminder - School hats are compulsory in Term 4.

These can be ordered online through [MyKindo](https://www.mykindo.co.nz/).

PB4L - POSITIVE BEHAVIOUR FOR LEARNING

OUR SCHOOL VALUES

Whenuapai School is a PB4L School. We teach behaviour through the use of our school values:

Respect Self, Respect Others, Respect Learning and Respect Environment.

Our PB4L focus for Term 1 2021: For the beginning of Term our focus is on all four School values, what they are, what each one means and how we can live the values every day.

We would love for you to discuss at home what these mean and look like in and around your child's classroom and at home.





Kindo School Shop

Our Kindo School shop allows you to view your personal account, purchase school hats and order school lunches easily – at a time that suits you!
It's open 24/7.

Your personal account can be viewed under the Student Account icon.

You will see all your outstanding payments, and you can choose to pay in full, or make a part payment on these items.

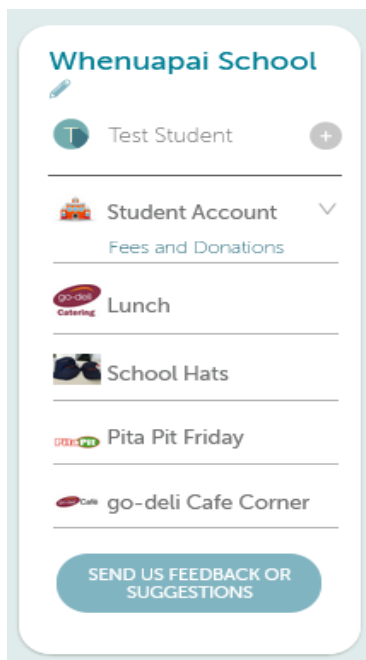
Optional extras can be purchased by clicking on your student's initial icon next to the item.

If you already have a myKindo or ezlunch account, you can [log in here](#).

New users can create an account by [clicking here](#).

Give the Kindo helpdesk a call if you need any assistance.

Freephone 0508 4 KINDO (0508 454 636) Monday to Friday, 8am to 4pm.



As a School, we have become more and more aware that some children and families in our community are in need. For this reason, we are setting up "The Hunger Buster Project" where we encourage families who are in a position to help, to be able to.

This could be by way of a monetary donation or it might be dropping off some of the following items which we can use to keep our beautiful children well fed. At this stage we would be asking for food donations of the following items:

- Fruit, Muesli Bars, Cup of Soup, Margarine, Bread and Milo

All of these items will help us to make sure hungry tummies are full which encourages a much more productive learning day for them. Alternatively, if you would like to contribute financially, we have set up a separate bank account for us to purchase such items.

ASB 12-3085-0494188-50

We thank you so much for any support, little or large. Every bit helps and we know as a community there will be many of you who will want to help in any way you can. Your generosity is so much appreciated.



Please help our students to show Respect for our Environment by packing 'Nude Food' (rubbish free) school lunches.

We are an **Enviroschool** now and we would really like to eliminate all the rubbish from school lunch boxes that unfortunately doesn't always end up rubbish bins. Let's work together to be rubbish free Whenuapai school!!



HEALTH & WELLBEING

We would like to remind parents, caregivers and whānau about the spread of viruses in school.

Please remind your children about the importance of good hygiene, proper handwashing and sneezing into their elbow.



If your child is unwell please keep them home.



Each term, board members, staff, and/or parents are asked to review and comment on specific policies. We have one policy for parents to review this term, **Home Learning**. Please click on this link to review the policy and give feedback if you wish:

<https://whenuapai.schooldocs.co.nz/index.htm?toc.htm?1893.htm>

If required enter the Username- **whenuapai** and Password - **airport**

Click on the Home Learning policy in the table:

1. Read the policy.
2. Click the red Policy Review icon at the right-hand top corner of the page. A new screen will appear.
3. Select your role (parent/caregiver) from the drop-down list.
4. Enter your name (optional).
5. Submit your ratings and comments.

If you don't have internet access, school office staff can provide you with printed copies of the policy and a review form



For our Policies and Procedures please visit SchoolDocs at: www.schooldocs.co.nz/

User- **whenuapai** Password- **airport**

Copyright: Except where stated, the content on this site is the copyright of SchoolDocs Ltd. It may not be reproduced without written permission from SchoolDocs Ltd.



We are a member of the House of Science, a charitable organisation that delivers science resource kits for our tamariki to use each week. They are looking for volunteers to help them restock these kits at Laingholm Primary school (54 Victory Road, Laingholm) on either Thursdays, Fridays or Both for a couple of hours in the morning. They are happy to have people come each week, month, term or even just once! Please contact Jess on 027 810 4129 or auckland@houseofscience.nz for more information.

We are looking forward to planting 300 NZ native trees in the Malcolm Hahn Reserve during this coming winter.

However - we need to do some preparation first - largely to get rid of those small pesky weeds that have come back. This will probably be our last weed clearing working bee before we start planting.

So, please come along and lend a hand for a couple of hours.

Bring gardening gloves and loppers if you have some - we have some spares also. A wheelbarrow would be great too.

Look forward to seeing you.

Weed Releasing Working bee in Malcolm Hahn Reserve

Sunday Feb 28th 10am – 12 pm

41 – 43 Waimarie Road, Whenuapai (Behind village hall).

Everyone welcome – bring along kids, neighbours and friends.



*** SURPRISE! *
ezlunch TURNS
10!
PARTY**

Let us bring the party to you!
Order ezlunch 8 - 19 March
and **win party bags for your whole class** including a
\$10 ezlunch voucher per child
...AND there's **10 cupcakes**
for the school office!

THANK YOU, FROM US!

Every order goes in the draw for a chance to win. One chance per order. Winner will be drawn on Friday 19 March 2021 and will be notified by phone or email. No correspondence will be entered into.



KEY CONTACTS		ONLINE PAYMENTS
Principal – Raewyn Matthys-Morris	rmatthys-morris@whenuapai.school.nz	Any queries please email Mr Tony Hitchcock at: thitchcock@whenuapai.school.nz Bank Account details: 12-3085-0494188-00 Reference: Students Name Details: The activity the payment is for If you pay online for more than one activity or pay for more than one student and various activities, please email Tony detailing what the payments are for. Payments can also be made via our online school shop at mykindo.co.nz
Deputy Principal – Molly Fletcher	mfletcher@whenuapai.school.nz	
Principal's PA – Jo Wright	pa@whenuapai.school.nz	
Learning Support Coord - Jill MacKenzie	lsc@whenuapai.school.nz	
HOD Sport – Greg Berry	gregb@whenuapai.school.nz	
Board of Trustees	wsbot@whenuapai.school.nz	
PTA	pta.whenuapai@gmail.com	
SKIDS After School Care	whenuapai@skids.co.nz	
Team Leaders		
Year 0-1 – Carli Hawley	carlih@whenuapai.school.nz	
Year 2 – Rebecca Archer	rebecca@whenuapai.school.nz	
Year 3 – Olivia Mead	oliviam@whenuapai.school.nz	
Year 4 – Paige Chellew	paigec@whenuapai.school.nz	
Year 5-6 – Chris Groen	chrsg@whenuapai.school.nz	
Year 7-8 – Karl Ganda	karlg@whenuapai.school.nz	



WHENUAPAI SCHOOL
14 Airport Road, Whenuapai
Auckland 0618, New Zealand
P: 09 416 8779
W: www.whenuapai.school.nz



The **Beep Beep! Day** project engages children in key **road safety** messages, helping them to learn about **road safety** issues and, crucially, inspiring their parents and local drivers to reduce danger on our **roads** and help protect children.



NOTICES:

2
0
2
1

FREE entry to Sir Graeme Douglas International

With just over a week to go until the **Sir Graeme Douglas International** returns to the Douglas Track & Field, we are delighted to announce that we are now offering **FREE** entry to this top-class event.

Come along on Saturday 27 February and watch Olympic and Commonwealth medallists Dame Valerie Adams and Tom Walsh, along with a host of top New Zealand athletes, as they compete for one of the last times on home soil before the rescheduled Tokyo Olympic Games. All of this, now for free!

At this family-friendly athletics event, witness the skill, power and athleticism of New Zealand's home-grown talent from just metres away.

Watch live and be part of the crowd creating an electric atmosphere to help cheer on our Kiwi athletes. Don't miss your chance to grab signatures and selfies after the event as the athletes stay and interact with the crowd.

Gates open from 4:30pm, with the main competition of the Sir Graeme Douglas International starting at 6:00pm. If you fancy some extra action, get down to the venue early to watch qualifying and pre-meet events from 5:00pm. Visit the [Athletics New Zealand website](https://athleticsnz.co.nz) for more information on the event programme.

Sir Graeme Douglas International 2021

World Athletics Continental Tour - Bronze Level Meet

Saturday 27 February

Douglas Track & Field at The Trusts Arena, 65 Central Park Dr

Brain Play coding, robotics, and 3d printing classes. After-school, weekend, and holiday courses.

Free trials available. Ages 5+. Email us for more information on info@brainplay.co.nz or see brainplay.co.nz.



Riverhead Brickfair!



Sunday 7th March
9am - 5pm
\$4 p/p under 3's free



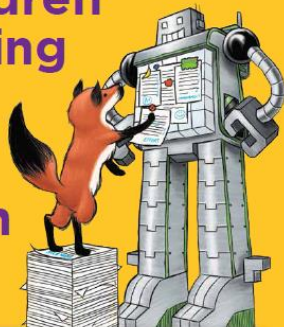
Riverhead Citizens Hall
1011 Coatsville Riverhead Highway



Coffee and BBQ available

Your children are amazing already.

We just help them prove it.



Tailored English and Maths tuition

- Boosts confidence and results
- Lessons personalised to individual needs
- Following the school curriculum
- From Reception to Year 11

numberworksandwords.com/nz

NorthWest Ph 416 3123

**NumberWorks
'nWords**



TUITION
CONFIDENCE
RESULTS



ST MARY'S COLLEGE OPEN DAY

Thursday 4 March 2021
Commencing 2.30pm & 6.30pm
in the Paul Keane Gymnasium

Please check the website for the most up-to-date information

NOW ENROLLING FOR 2022

Enrolments are open for Year 7 students and a small number of places for girls in other levels

St Mary's College has no zoning restrictions

For more information see our website www.stmaryak.school.nz



CLOSING DATE FOR 2022
ENROLMENT APPLICATIONS
Thursday 18 March 2021

Join our Mercy family
21st Century Woman of Mercy